

Examples of Non-Complaint Power Leads found during the first round of scheduled testing:



This lead which had been sliced exposing the wire sheathing & wires. It had been covered in green electrical tape and was encased in conduit and when we pulled the lead out water ran out of the conduit!



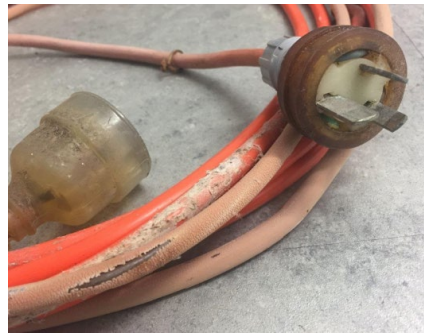
The insulation (orange) was so weathered and degraded that you can see the wire sheathing. The plug socket could not be disconnected from the van inlet as they had fused together.



This plug's pin had been damaged most likely due to constantly drawing a high volume of power.



This inlet is non-compliant as it has no weather flap. Broken weather flaps are also non-compliant. Removable plug ends MUST be clear, not opaque as this one is.



The orange insulation on this lead has weathered, degraded and then split. The plug also requires replacing.

Site Safety

Here are just a few examples of what we found strewn around the park after the storm we had this week.

